**Integrate**

scheduling, dispatch,  
GPS and routing

**Digitize**

time and task  
management

**Calculate**

accurate driver  
hours and pay

**Optimize**

bus, driver and  
route scheduling

## ByteCurve 360 Schedule and Dispatch

Simplify daily management onto a single platform.

Integrating information platforms opens the door to greater daily efficiency. Non-integrated fleet and transportation technologies consume resources without providing essential insights to optimize operations.

On the other hand, there's ByteCurve 360 integrated with [Zonar V4™ telematics technology](#).

ByteCurve 360's scheduling and dispatch brings together the Zonar V4's GPS data and the information your routing provider serves to open a 360-degree view into your operation. More information, more control.

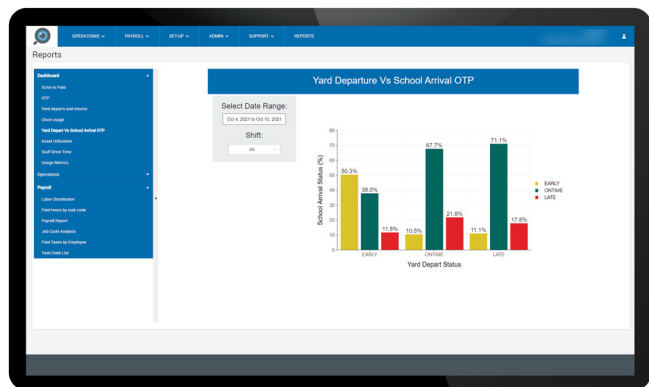
- Make timely, more informed decisions faster.
- Reduce unnecessary costs.
- Enhance and extend safety strategies.

Stay on time, even amid driver shortages.

On a good day, there's a different driver on 10 to 15% of a fleet's routes. And on a good day, 5% of the buses are in for preventative maintenance. On top of that, add the buses that don't start in the morning.

### Key features

- Single dashboard view
- Zonar V4™ GPS integration
- Routing provider integration
- On-demand, on-time reporting
- Real-time alerts for sign-ins and sign-outs
- Mass task assignment
- Employee absence management
- Real-time alerts for yard departures and arrivals
- Mass time shift for early and late starts



Driver Name	Driver ID	Route	Date	Status
John Doe	1234	101	10/11/2021	New arrival

Manually updating schedules and bus assignments on the fly, in a room full of people, and without being able to document changes, leaves plenty of room for inevitable error.

ByteCurve 360's scheduling and dispatch is the only platform that integrates Zonar V4 GPS data and routing information, so you can make real-time decisions and push real-time updates. All digitally, all in real time.

- Remotely assign routes and develop schedules online.
- Make real-time, strategic scheduling and bus assignment decisions.
- Push changes directly to driver tablets.
- Send employees alerts for late sign-ins and delayed buses.

Decisions and updates are made on a single, online integrated platform and digitally documented. Most importantly, this integration enables greater on-time performance, and optimized bus and driver utilization. Must-haves, especially when you're low on drivers.

## Control the timeclock, control costs.

Payroll can account for up to 60% of any school bus fleet's operational costs. Accuracy is essential, but paper timesheets are prone to human error. And there's no standardized process that fits every fleet.

ByteCurve 360's online scheduling functions as your gatekeeper to control payroll costs and ensure drivers are paid appropriately.

- Schedule when drivers can sign in to their route.
- Assign when drivers start time and tasks.
- Eliminate accidental overages.
- Reduce risk of accidental underpayments.

Usually drivers have three sign-ins and sign-outs each day: morning, mid-day and afternoon. Sitting on the bus for a few extra minutes outside of scheduled times may seem insignificant, but every minute adds up. Additional sign-ins and sign-outs for ad hoc field trips further complicate matters.

Using this solution standardizes the process, minimizes time spent on calculations and ensures drivers are paid appropriately.

Using a desktop kiosk, drivers sign in and out of their routes, and the system updates in real time. Dispatchers have a live, complete view of operations, and can automatically verify an employee's time if it falls outside the schedule, but within a specified tolerance.



For more information, visit [zonarsystems.com](https://zonarsystems.com)