

ZONAR[®]

Construction Fleet & Asset Management



Working smarter starts with data.

Optimize asset utilization. Right-size your core fleet. Enhance safety and compliance. Identify and target inefficiencies across the fleet. Start by using a modern smart fleet solution built to track every on- and off-highway asset you have, on one platform.

Construction vehicles and assets work in harsh environments, through inclement weather, day or night. Equip your fleet with modern, innovative smart fleet management and mobility solutions by an industry leader who understands your real-world challenges, big and small.

Know where every asset is, what it's doing, how it's performing—and if you can deploy it elsewhere. Prevent unplanned downtime and save thousands in critical repair costs through proactive and predictive remote diagnostics, as well as electronic inspection reporting. Track data and trends in utilization to determine if you have the assets needed to make new commitments. All on a single, mobile-friendly platform that puts fleet data at your fingertips—even when you're in the field.

While you're at it, work with a team of dedicated safety and compliance experts to build a safer, more compliant fleet.

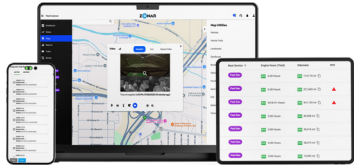
Round-the-clock support, on us.

If you need help, call our support professionals 24/7/365, including weekends and holidays. Email us for a response and resolution within 2 business days. And chat with us online for a solution within 4 hours.

No charge.



Equip your fleet to work smarter, from its data up.



Zonar Ignition™

Drive data-based decisions with detailed visibility. Monitor and manage your entire fleet of on- and off-highway assets online, on your desktop, tablet and smartphone.



Zonar V4™ TCU

Track each asset's location, performance and health in real time. See where and when every start, stop, turn, brake, idle and PTO event occurs, as it occurs.



Zonar Logs™

Accurately and easily track on-highway Hours-of-Service (HoS) for greater compliance. Reduce violations and manage hours online—even for operators that cross the U.S.-Canada border.



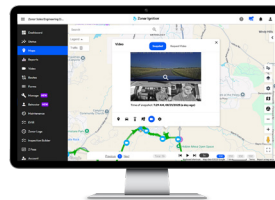
Operator tablets

Expand your fleet's capabilities and streamline daily tasks, including inspections. All with a library of Zonar and trusted third-party mobile apps that digitize workflows.



Zonar ZTrak®

Track non-powered assets wherever they roam, including into extreme temperatures, rain, sleet and snow. Ideal for assets deployed over long period and in remote areas.



Zonar Coach™

Build a safer fleet and exonerate falsely accused operators with on-demand footage. Choose our complete safety solution or just our standalone dashcams.



EVIR®

Electronically verify that every required walkaround inspection is performed properly. Comply with DOT, OSHA and MSHA regulations. Available on tablets and smartphones. Or with our standalone, rugged 2010.



Zonar LD™

Plug it into a light-duty vehicle's OBD II port, and track location, usage, idling, PTO, I/O, speed and location. No effort, no downtime.



Zonar SightIQ™

Boost efficiencies, uptime and savings across your operation. Combine data across sites. Monitor asset health across makes, models and major components. All online.

Electronically verify every inspection.

Electronically verify every inspection.

One pencil-whipped miss can cause an accident, incur a violation, and boost your insurance rates. Use our electronic verified inspection reporting (EVIR) system to make sure each required inspection is performed correctly, and the results are captured accurately.

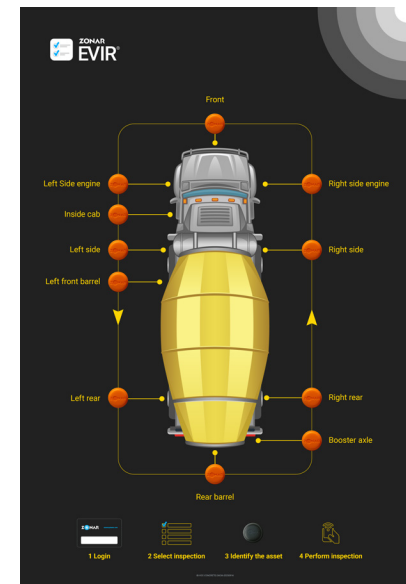
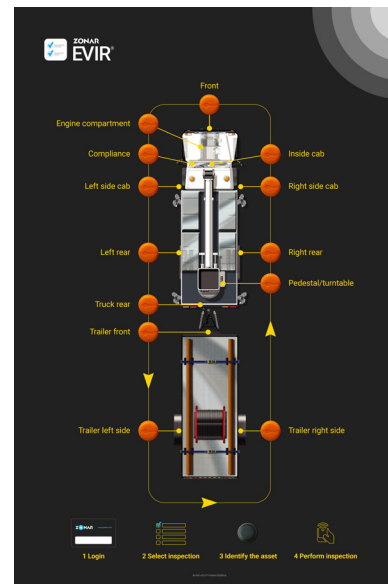
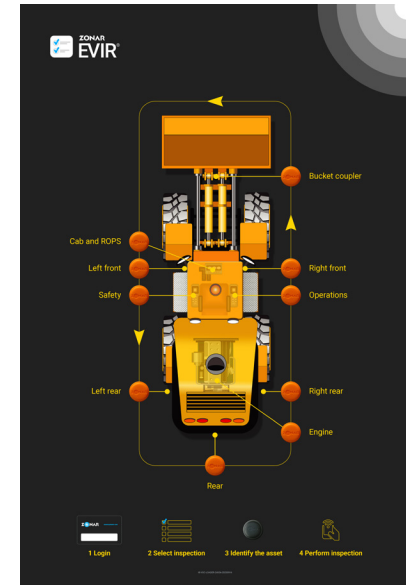
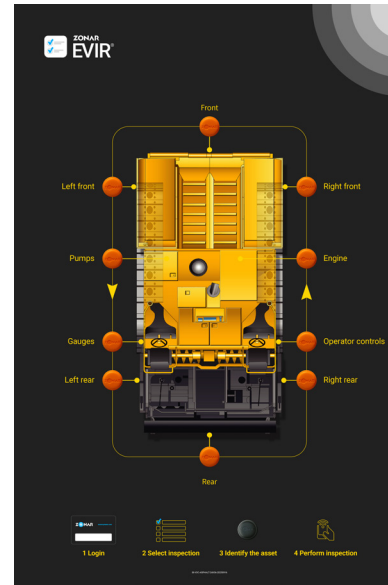
- Place a Zonar tag on each inspection zone of the vehicle or piece of heavy equipment.
- Operators must physically scan each tag when they inspect that zone's components.
- As they perform the inspection, they mark defects, add notes and capture photos.
- When the inspection is complete, the results are uploaded to Zonar Ignition.

Operators can use the downloadable EVIR app on their tablet and smartphone to inspect tagged and taggless items such as rental or leased edquipment and vehicles. (Available on the Google Play Store and Apple App Store.) Those who don't take a smart device into the field can use our rugged, proven 2010 inspection device to perform and upload the same way.

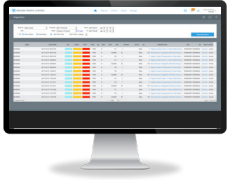
Takes half the time of paper-based inspections.

Integrate with your maintenance platform for more uptime.

Integrate EVIR inspection reports with your maintenance platform so major defects are prioritized and addressed sooner, not later. Pre-populated defects display at the start so operators already know what's been reported. And redundant workorders are reduced. Faster reporting, prioritization and resolution—together, they deliver more uptime. And with fewer human errors.

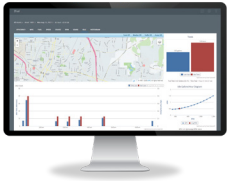


Make high performance standard.



Remote diagnostics

Access fleet health reports in Zonar Ignition for the data to keep each fleet asset in safe, peak condition.



Zonar ZFuel™

Find opportunities to run more efficiently on less fuel. Look at more than just MPG to view real-world usage, even in harsh environments. Plus, protect against excessive idling and fuel theft.



Leading OEM partnerships

Drive down your TCO with factory-installed telematics devices and remote diagnostics data collection, from the start—as the vehicle leaves the factory. Rich data, deeper insights, longer-running vehicles.



Zonar FaultIQ®

Predict and prevent downstream issues to save thousands in critical repair costs. Decode faults into plain speak, see all fault data, and receive expert guidance. All vehicle makes, models and major components—on one screen.



ContiConnect Live Integrated

Monitor each tire's pressure online, regardless of the vehicle's location. Keep each tire healthy to save fuel, enhance safety and increase your ROI through a longer lifespan.

What would you like to track or monitor?

[Get pricing](#) | [Contact us](#)

Fully supported solutions enable nearly 100% FEMA recovery reimbursement.

"Zonar supports its products 100% after the initial sale, which is huge. We've had a lot of companies who, once we've bought in, are non-existent. Zonar is still there for us."

Mike Stevens

Fleet Services | Kootenai Electric Cooperative

Monitoring on-the-fly fleet assets.

"What gets measured, gets done is our motto. Zonar helps us to do this."

Trey Bowen

President | Superior Bowen Asphalt

Work your fleet assets harder and smarter.

View your mixed fleet in detail, on one platform.

Zonar SightIQ™ Optimize delivers a detailed, real-time view across your construction fleet: vehicle and machine, new and old, across manufacturers. Analyze efficiencies and dial in on what's eating away at productivity. All through a single pane of glass.

- Visualize key performance indicators (KPIs) to pinpoint what needs to deliver better.
- Access asset utilization to right-size and redeploy more effectively.
- Reduce your cost of materials and unnecessary replacements, leases and rentals.
- Track performance trends that increase wear and tear on vehicles and machinery.
- Save direct labor costs through more uptime and less idling time.

Compare data by site, multiple locations or across your fleet. And grant select personnel such as foremen access to data, so they can also streamline site processes and enhance efficiencies at their site.



Consolidate data across manufacturers and locations.

Monitor asset health from the inside out with Zonar SightIQ™ Predict. Per ISO standards (AEMP 2.0), SightIQ Predict collects and decodes proprietary ECM data across major manufacturers, such as Caterpillar, Komatsu, John Deere and Hitachi to name a few examples. Then, we translate that data into actionable insights and predictive diagnostics you can use to keep assets in peak operating condition. All so they're more productive, longer.

- Reduce the cost of unexpected repairs, replacement parts and downtime.
- Detect equipment faults before operators do.
- Predict downstream faults before they cause failures in the field.
- Avoid deploying faulty equipment and machinery.
- Order parts ahead of time and schedule repairs when it's convenient, not when it's critical.

SightIQ Predict shows an insider's view of your assets' health. The more problems you prevent, the healthier your bottom line.

Prioritize proactive fleet health.



Save thousands in critical repair costs.

Zonar FaultIQ

Zonar FaultIQ, powered by Noregon, is an all make, all model, all component diagnostic software for predicting faults before they happen. Decode faults quickly, and prioritize and schedule repairs to keep medium- and heavy-duty vehicles rolling, longer.

- See a snapshot of your entire fleet on a single dashboard.
- Monitor Health and Safety Scores for each vehicle, color-coded based on severity.
- Trust recommended action plans based on input from ASE-certified technicians.

Need an off-the-shelf solution? Let's build it.

API integrations

Many state and local government fleets are mixed, including passenger vehicles as well as sophisticated, specialized assets such as snow plows and waste collection trucks. If you need additional insights not currently available in our off-the-shelf solutions, let's put our heads together to extend our platform and optimize your operations. Work with our in-house development experts to develop custom reports, real-time data streams and customized projects.

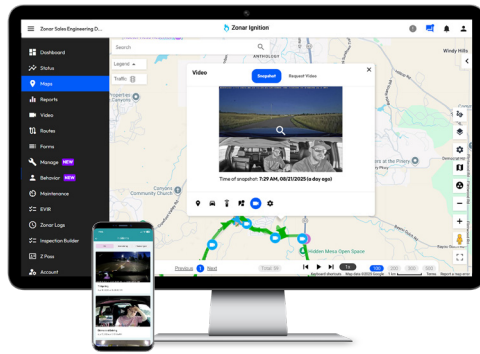
Our standardized delivery process eliminates roadblocks and delays, so your custom services are up and running as quickly as possible.

Strengthen your culture of safety.

Rely on experts who live and breathe safety and compliance.

Avoid violations and help everyone go home safe. Work with our experts to build a culture of safety, even in the field.

- Navigate local, state and federal regulations that apply to your fleet.
- Evaluate operational policies to align with safety strategies.
- Reduce violations by verifying required inspections and maintaining records properly.
- Modernize how your safety managers' implement and monitor safety strategies.



Prevent incidents and save lives.

Safe driving isn't top of mind for many operators—but it's still essential. Zonar Coach™ prevents incidents and extends the reach of your safety program to smaller, light-duty vehicles. Its HD dashcam detects eight key unsafe behaviors, including distracted driving. When it does, operators are alerted to immediately self-correct then and there. Available as a complete, in-cab safety solution, or a standalone smart dashcam.

- Prevent incidents and accidents instead of just analyzing them afterward.
- Protect against false claims and nuclear verdicts by exonerating operators.
- Appropriately answer complaints with vehicle data and on-demand footage.
- Empower operators to own their driving performance on and off the highway.

Meet your eyewitness with more angles.

Add an external-facing, plug-and-play camera to the side or rear to capture more, from more angles. See sideswipes, review rear accidents and confirm if a customer's trash was collected. Installs directly with the vehicle's Zonar DashCam device.

Trusted by industry leaders.



Rich data for International® Trucks, delivered.

Pair International's renowned series of vehicles with our comprehensive data sets for unparalleled vehicle monitoring and maintenance. Use their all-make advanced remote diagnostics solution, OnCommand® Connection, to access comprehensive diagnostic data pulled through the Zonar TCUs across your fleet.

- Access comprehensive diagnostic data pulled through the Zonar V4.
- More efficiently manage your International Trucks from the inside out with rich diagnostic data.

Two sets of expertise to hear what your Daimler trucks are telling you.

Daimler's best-in-class design combines our innovative analytics hardware and software to transform how you keep vehicles working hard and earning strong. Detroit Connect® Virtual Technician® records before, during and after a fault occurs, giving Detroit engineers a 360-degree diagnostic view to interpret. Standard on select Freightliner and Western Star vehicles.

Lower costs, enhance safety.

Working with our Daimler partners, our proven OEM telematics platform has been extended to enable the Detroit Connect® platform with their Analytics service. Use this critical fuel and safety insights to cut costs and improve safety for your Daimler vehicles.



About Zonar

Zonar exists because you deserve better. Student transportation fleets trust us to protect our nation's children every day. Now, we're the trusted leader and clear choice for small to mid-sized businesses, enterprise fleets, and public sector organizations across the Americas. To some, you're one of a million. To us, you're the one in a million. Our proven fleet management solutions help you run better, be safer, more efficiently, and save more everything. We work later, push harder and deliver what's needed, faster—for you.

You might not get fired for choosing someone bigger or shinier. But when there's a surprise, you'll want the one who picks up and shows up to help. You call? We answer, 24/7. Whatever size, mix or industry your fleet is, we move at your speed to help solve real-world problems.

Zonar HQ: Seattle, WA. Other locations: Cincinnati, OH, West Chicago, IL & Lakeland, FL. Top priority: You.

zonarsystems.com | info@zonarsystems.com | [\(877\) 843-3847](tel:8778433847)

© Zonar Systems, Inc. All rights reserved.

ZONAR

© 2024 Zonar Systems, Inc.