

ZONAR[®]

Freight Transportation Management



Drive your fleet further.

Streamline operations. Empower every driver and retain top talent. Enhance safety and compliance. Keep each truck operating at peak performance, for longer. All by using patented, modern smart fleet solutions built to help you navigate today's challenges.

Delivering safely and on time isn't easy, especially given today's never-ending challenges and always-changing regulations. Outfit your operation for success with modern, innovative smart fleet management solutions by an industry leader who understands what you're up against and what you need to do.

Optimize every mile, truck, driver hour and drop of fuel using detailed, data-based insights. Reduce downtime, and save thousands in critical repair costs through proactive and predictive remote diagnostics, as well as electronic inspection reporting. Work with dedicated experts to build a safer, more compliant fleet.

While you're at it, empower drivers with mobile tools to do their job more easily, efficiently and safely. Do that and keep their trucks in tip-top condition to strengthen driver satisfaction and raise your fleet's retention rates.

Round-the-clock support, on us.

If you need help, call our support professionals 24/7/365, including weekends and holidays. Email us for a response and resolution within 2 business days. And chat with us online for a solution within 4 hours.

No charge.



Make data-based moves forward.

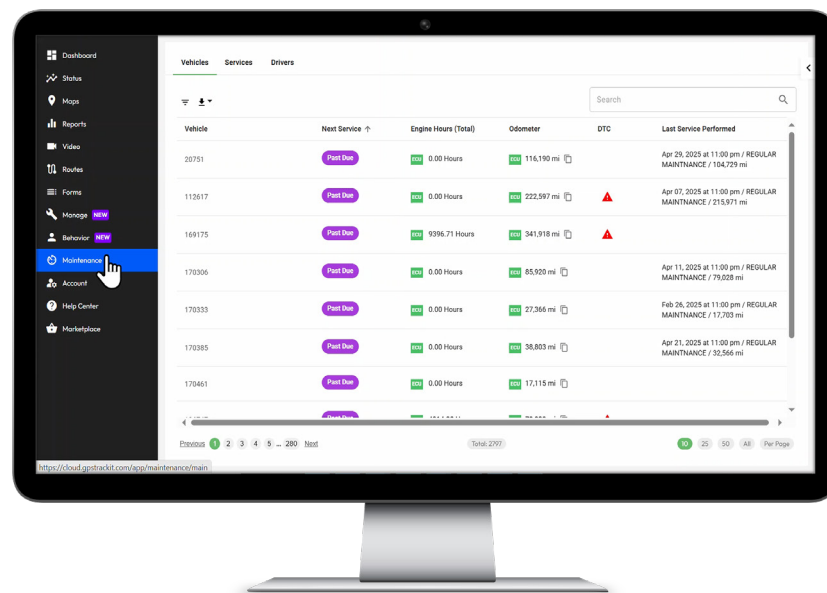
Manage your fleet on the go.

Zonar Ignition™

Make timely, informed decisions with smart fleet management reporting that's accessible anytime, anywhere. Monitor and manage your entire fleet from your desktop, tablet and smartphone. Quickly find important reports and details using intuitive dashboards. And customize your own to make life that much easier.

- Track vehicles online, in real time, even when they're in motion.
- Increase fleetwide uptime and utilization.
- Stay on top of vehicle inspections and ELD compliance.
- Manage real-world driver performance and efficiency.
- Create alerts to know when something needs your immediate attention.

Ignition pulls quality, real-time vehicle and asset data directly from our own industry-leading hardware: the Zonar V4, Zonar LD and Zonar ZTrak.



Zonar V4™
Telematics Control Unit.



Zonar LD™
Light duty TCU



Zonar ZTrak®
Asset tracker.

Enhance visibility and utilization.

Zonar V4™ TCU

Know your fleet in detail with our OEM-grade, tamper-resistant telematics control unit.

Monitor location, activity, vehicle health and driver performance to make decisions based on real-time, real-world insight.

Include light-duty vehicles.

Zonar LD™ TCU

Track passenger trucks, cars and vans with our play-and-play light-duty TCU. Monitor location, activity and diagnostics to make the most of more of your fleet.

Installs in minutes. No special tools required.

Track assets, everywhere.

Zonar ZTrak®

Protect trailers and equipment from loss and theft. Attach a small, rugged, unassuming equipment tracking device and track almost any asset on the same platform you do Zonar V4- and Zonar LD-equipped vehicles.

Extend impact with unique capabilities.

You need it? Let's build it.

Zonar Professional Services

Today's fleets are sophisticated. If you need additional insights specifically for your fleet, let's put our heads together to extend our platform and optimize your operations. Work with our in-house professional services experts to develop custom reports, real-time data streams and customized projects.

Our standardized delivery process eliminates roadblocks and delays, so your custom services are up and running as quickly as possible.

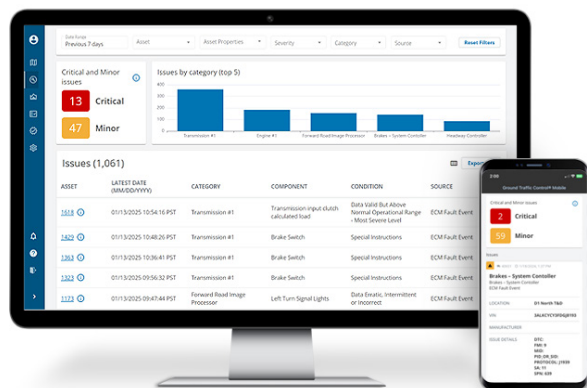
"What sold me on Zonar is that they have everything in house. From electronic inspections, to GPS tracking, to detailed reporting, Zonar provides an integrated hardware and software platform."

Josh Lacy

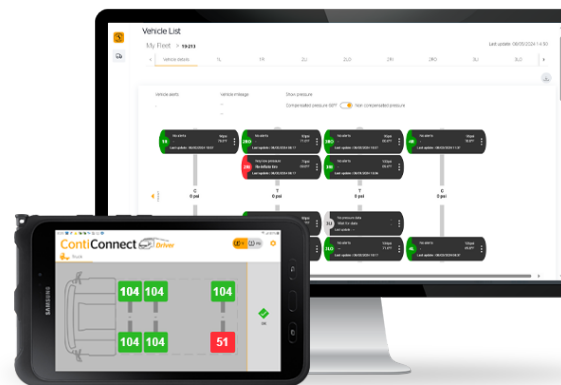
Director of Operations, Nebraska Transport Company



Keep your fleet healthy, ready and reliable.



See what's critical and what's minor.



See a bird's eye view of each truck's tires.

Take your fleet's pulse with a single look.

Maintenance Overview

Check each truck's overall health with diagnostics and maintenance reporting that tells you what's what—in one place, within Ignition.

- Avoid more breakdowns and on-the-road failures.
- Spot engine fault codes and low vehicle batteries earlier.
- Address and prioritize urgent needs sooner.

Monitor every tire, online.

ContiConnect Live Integrated

Add a remote, online TPMS to your Zonar solutions for real-time, online insight into every tire—regardless of location. And give drivers a bird's eye view of their truck's tires to see pressure problems before a tire fails.

Uncover ways to run more on less fuel.

Zonar ZFuel™

Find opportunities to run more efficiently. Look at more than just MPG to reward efficient driving and save hard costs. Plus, protect against fuel theft and wasteful idling.

Quickly equip any tire for remote monitoring.

ContiConnect Valve Cap Sensor

Maximize your fleet's ROI with an optimal installation path to Continental's more robust tire-mounted sensors, which offer more insights into tire health during routine or scheduled maintenance and operations.

Even when they're deployed.

Save thousands in critical repair costs.

Zonar FaultIQ®, powered by Noregon

Know what's going on inside each vehicle, schedule necessary repairs, and keep each asset running better, longer. Decode faults into plain English, prioritize issues, and prevent costly tows and driver downtime. Consolidate shop visits to address current issues and prevent future issues at the same time, for more uptime.

All makes, models and major components. On one dashboard.

- Monitor Health and Safety Scores for each vehicle, color-coded based on severity.
- Trust recommended action plans based on input from ASE-certified technicians.
- Be notified of defects and issues that often lead to downstream faults.



Electronically verify every inspection.

Know for sure each one is done right.

One pencil-whipped miss can cause an accident, raise your CSA score, or boost your insurance rates. Use our electronic verified inspection reporting (EVIR®) system to make sure each pre- and post-inspection is performed correctly, and the results are captured accurately. Takes up to half the time of paper-based inspections.

- Place a Zonar tag on each inspection zone of the tractor and trailer.
- Drivers must physically scan each tag when they inspect that zone.
- As they perform the inspection, they mark defects, add notes and capture photos.
- When the inspection is complete, the results are uploaded to Ignition.

Comply with DOT and OSHA regulations. And streamline roadside inspections with easy-to-pull EVIR inspection reports for a complete vehicle history of up to 12 months.

Drivers can also use the EVIR mobile app to inspect tagged and tagless, temporary items such as rental tractors or another company's trailer. Available on the Google Play Store and Apple App Store.

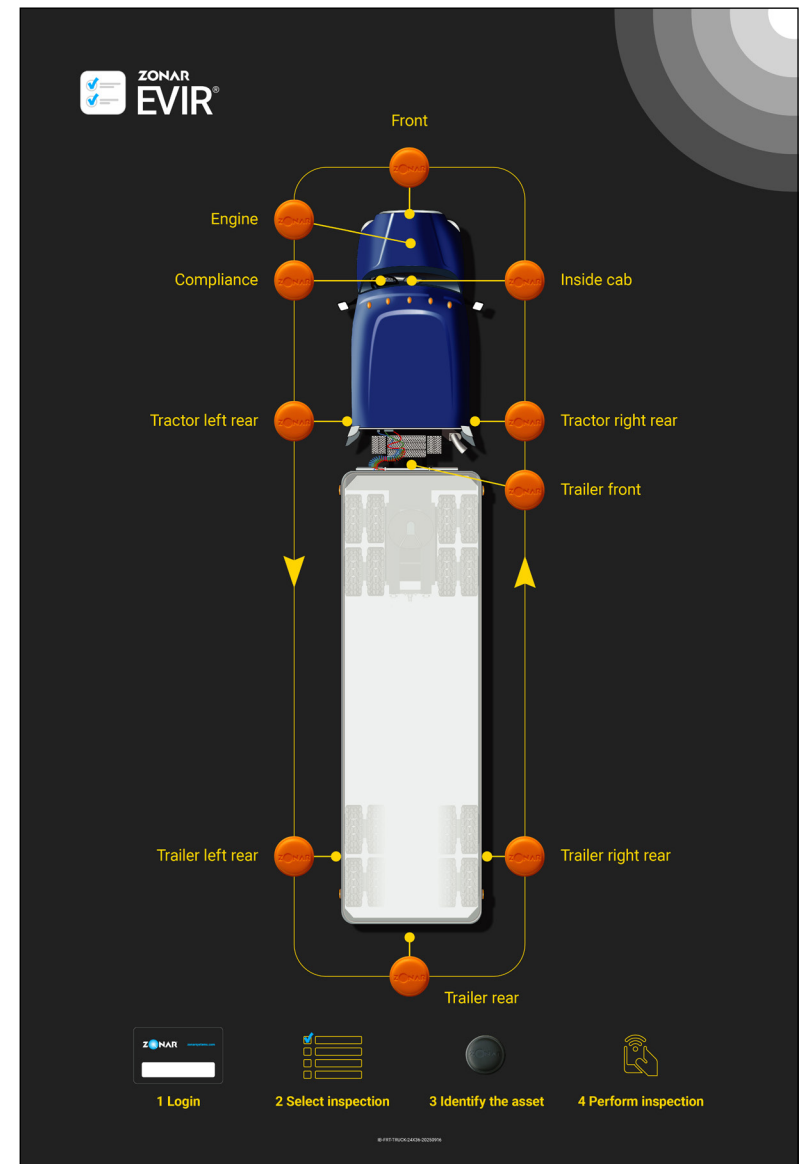
Integrate with your maintenance platform for more uptime.

Integrate EVIR inspection reports with your maintenance platform so major defects are prioritized and addressed faster. Together, faster reporting, prioritization and resolution deliver more uptime.

And with fewer human errors.

"I would never think about using another company's solution if it meant losing EVIR. That, plus its maintenance workflow solution and the outstanding customer support is why we stay with Zonar."

Deon Bunker
COO, Cowboy State Trucking



Protect your fleet and your drivers.



Ensure ELD compliance, then get on with business.

Zonar Logs™

Accurately and easily track driver hours using our Hours-of-Service (HoS) application. Reduce violations and manage hours online—even for drivers who haul across the U.S.-Canada border.

- Self-certified with the FMCSA website and third-party validated
- Meets title 49 CFR 395 Electronic Logging Devices and Hours-of-Service Certification
- Third-party certified with Transport Canada's accreditation body, COMDriver, for use by Canadian fleets and federally regulated carriers crossing the U.S. and Canada border
- Automatically updates driver status based on vehicle data, and alerts them when they're approaching violation

See what happened, inside the cab and out.

Zonar Coach™

Prevent accidents and incidents instead of just analyzing them. Coach's HD dashcam uses artificial intelligence and a g-force accelerometer to detect seven key unsafe behaviors. When it does, Coach alerts the driver to self-correct then and there—and captures objective footage for later evaluation.

- Protect against false claims and nuclear verdicts using objective evidence to exonerate your drivers.
- Level the playing field for evaluating driver performance based on data.
- Build a more effective safety program to help lower your commercial insurance rates.

"When law enforcement asks my drivers for their electronic logs, our drivers report back that the process is simple and officers understand [Zonar Logs] better than any other solution they have used."

Jimmy Pardo

Vice President and Founder, P&B Transport, Inc.

Streamline drivers' daily tasks.

Equip drivers with professional tools.

Zonar Mobile Ecosystem™

Stand out as a preferred employer who treats drivers like professionals. Equip them with professional driver tools, including ruggedized tablets loaded with essential Zonar apps and vetted third-party apps.

Expand driver tablet capabilities.

Zonar App Marketplace

Flexibility, expandability and productivity. Access our marketplace for more mobile tools, including Google Play certified third-party apps.

Add and remove apps as your fleet evolves.

Unify their workflows.

Zonar MobileCommand™, powered by Eleos

Centralize route planning, real-time messaging, navigation, parking, load workflows and document capture so drivers can more easily manage their trip.

All with one app, one login, one interface.

- Add EVIR inspections to the dashboard for streamlined maintenance workflows.
- Integrate HoS records so drivers track their hours-of-service using the same interface as their other driver tools.
- Provide multiple communication methods, including real-time messaging, to keep drivers informed.
- Automate trip management for driver managers to share stops and load assignments directly with drivers.
- Unify documents and document submissions to make the process faster, easier, and less vulnerable to human error.
- Customize the app's dashboard to prioritize tools.
- For each load, show when they'll be paid, when they were paid, or the next steps needed to get paid.
- Provide the same look, feel, and functions on tablets and smartphones so drivers enter and exit the cab as they need.
- Integrates with most common TMSs.



Trusted by industry leaders.



Penske professionals keep your fleet rolling.

Penske vehicles equipped with a Zonar V4 pull rich diagnostic data directly from the vehicle and deliver it to Penske professionals, who use that information to keep each vehicle in top condition through better maintenance.

- Reduce required capital outlay because the Zonar V4 is already on board.
- Streamline IFTA fuel tax data gathering.
- Request repairs for defects found during EVIR inspections.
- Rely on the Penske 24/7 Roadside Assistance team to remotely identify and prioritize issues.



Rich data for International® Trucks, delivered.

Pair International's renowned series of vehicles with our comprehensive data sets for unparalleled vehicle monitoring and maintenance.

Use their all-make advanced remote diagnostics solution, OnCommand® Connection, to access comprehensive diagnostic data pulled through the Zonar TCUs across your fleet. More efficiently manage your International Trucks from the inside out with rich diagnostic data.



Two sets of expertise to hear what your Daimler trucks are telling you.

Daimler's best-in-class truck design combines our innovative analytics hardware and software to transform how you gain greater performance. Detroit Connect® Virtual Technician® records before, during and after a fault occurs, giving Detroit engineers a 360-degree diagnostic view to interpret. Standard on select Freightliner and Western Star trucks.

Working with our Daimler partners, our proven OEM telematics platform has been extended to enable the Detroit Connect platform with their Analytics service. Use these critical fuel and safety insights to cut costs and improve safety for your Daimler trucks.

About Zonar

Zonar exists because you deserve better. Student transportation fleets trust us to protect our nation's children every day. Now, we're the trusted leader and clear choice for small to mid-sized businesses, enterprise fleets, and public sector organizations across the Americas. To some, you're one of a million. To us, you're the one in a million. Our proven fleet management solutions help you run better, safer and more efficiently. We help you save more of everything. We work late, push harder and deliver what's needed, faster—for you.

You might not get fired for choosing someone bigger or shinier. But when there's a surprise, you'll want the one who picks up and shows up to help. You call? We answer, 24/7. Whatever size, mix or industry your fleet is, we move at your speed to help solve real-world problems.

Zonar HQ: Seattle, WA. Other locations: Cincinnati, OH, West Chicago, IL & Lakeland, FL. Top priority: You.

zonarsystems.com | info@zonarsystems.com | [\(877\) 843-3847](tel:8778433847)

© Zonar Systems, Inc. All rights reserved.

ZONAR